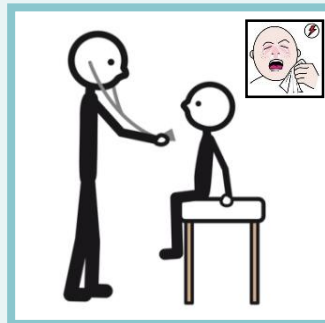


CIRCUITO A CONSULTA Y PRUEBAS DE ALERGIA

S





NOSOTROS

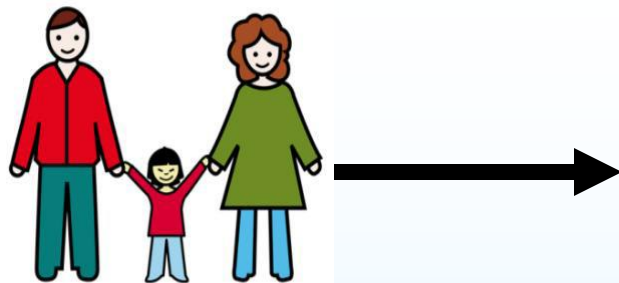


ENTRAMOS



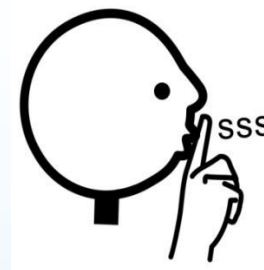
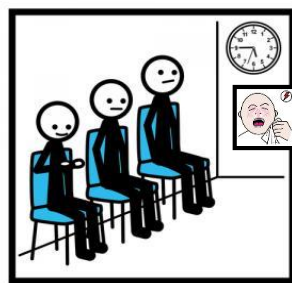
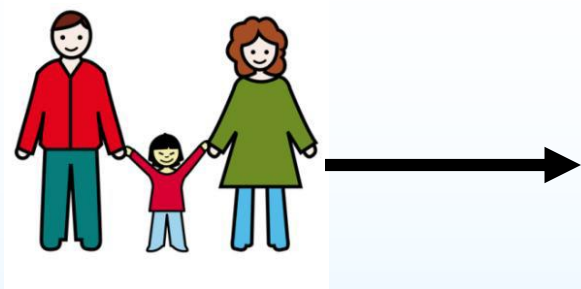
POR LA PUERTA PRINCIPAL





CON MIS PADRES VOY A L PASILLO DE CONSULTAS





CON MIS PADRES VOY A LA SALA DE ESPERA Y ESPERO EN SILENCIO





OIGO



MI NOMBRE,



ENTRO



EN LA CONSULTA



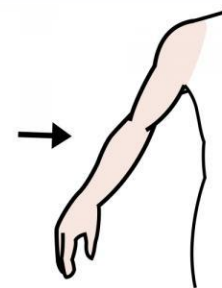
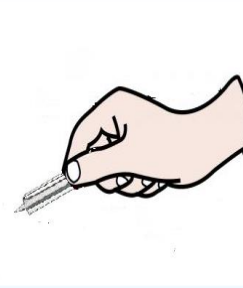
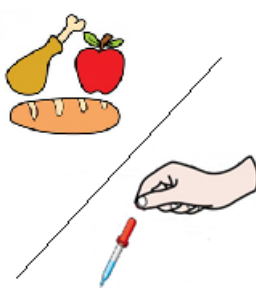
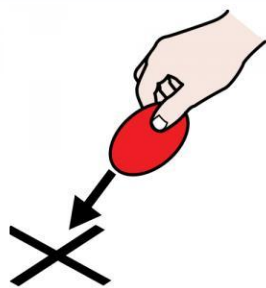
Y ME SIENTO



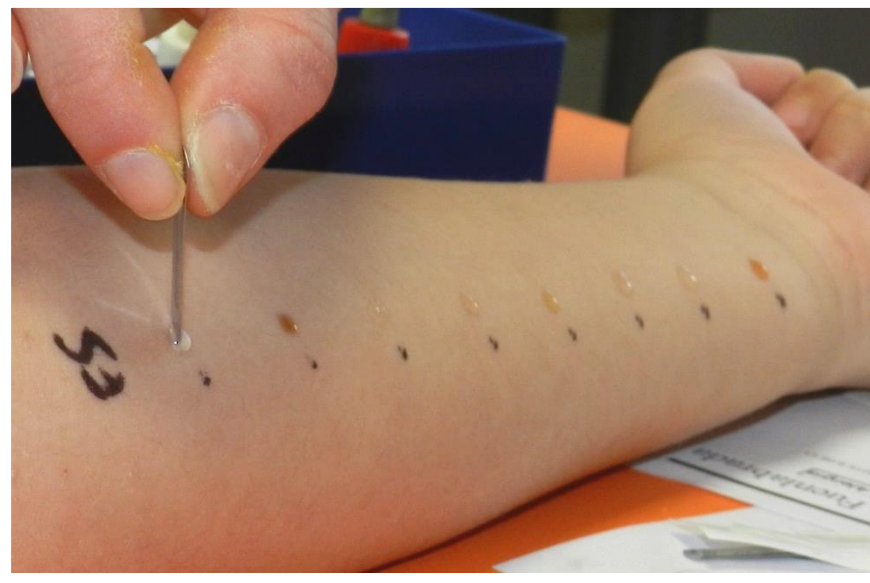
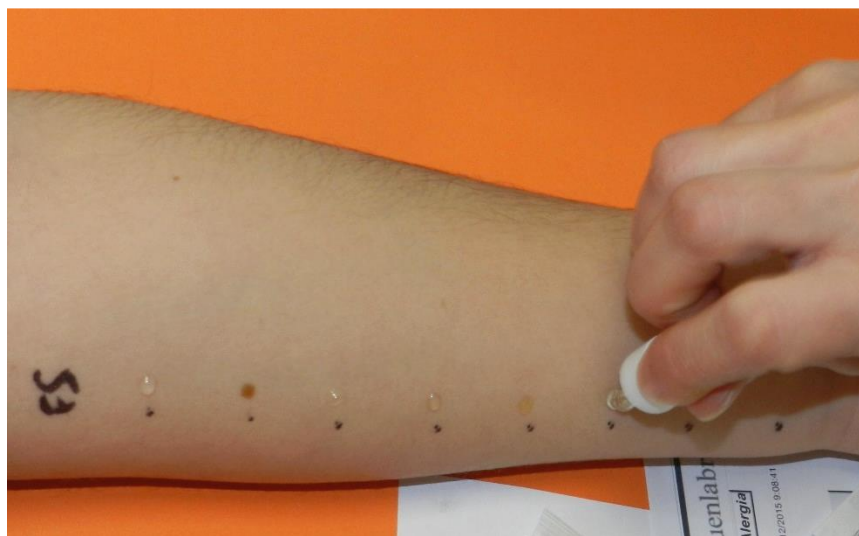


EL ENFERMERO DIBUJA RAYAS EN MI BRAZO





EL ENFERMERO PONE ALIMENTOS O GOTAS Y PINCHA CON LANCETA MI BRAZO





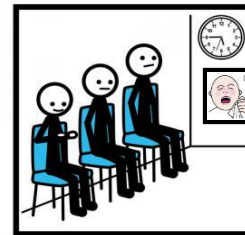
YO



ESPERO

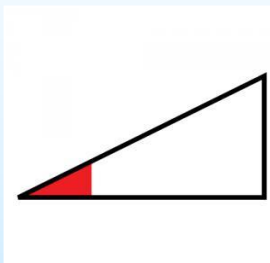
15'

15 MINUTOS EN SALA DE ESPERA

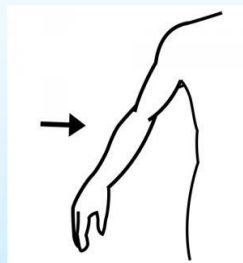


APARECEN

RONCHAS



PEQUEÑAS EN MI BRAZO





EL ENFERMERO



MIDE



LOS HABONES DEL BRAZO

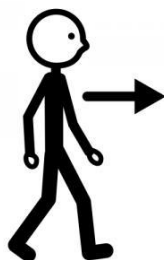




OIGO



MI NOMBRE, Y

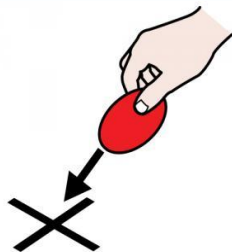


VOY A LA SALA DE ESPIROMETRÍA





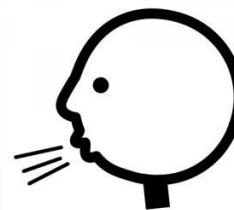
YO



PONGO



EL TUBO EN MIS LABIOS Y



SOPLO



MUCHO.

